



Barista Application Framework

BASIS DD Definition Import Utility

Overview	3
Dictionaries	3
Import Process.....	4
Import Definition File Format	5
Sample Definition File	5
DIR (Directory)	5
MOD (Module).....	5
PREFIX (Table ID and Element Type Prefix).....	5
COMP (ASC Company ID).....	5
PROD (ASC Product ID)	6
XREF (Column Name Cross Reference)	6

Overview

The BASIS Data Dictionary (DD) is widely used because of the ODBC abilities it provides. Various software applications, as well as many “home grown” software installations, include utilities that create the BASIS DD by various means. The Barista Application Framework requires additional information when defining forms, and therefore uses a different data dictionary than the BASIS DD.

The BASIS DD Definition Import Utility provides a path for customers wishing to develop using Barista and currently have their dictionaries defined in a BASIS DD. The purpose of this utility is to duplicate the selected BASIS DD definitions in the Barista dictionary.

The conversion utility is not meant as a “magic bullet” that will automatically convert a system and display it with a graphical interface. Rather, it will import the basic requirements for Barista, allowing users to quickly move forward with their development.

Dictionaries

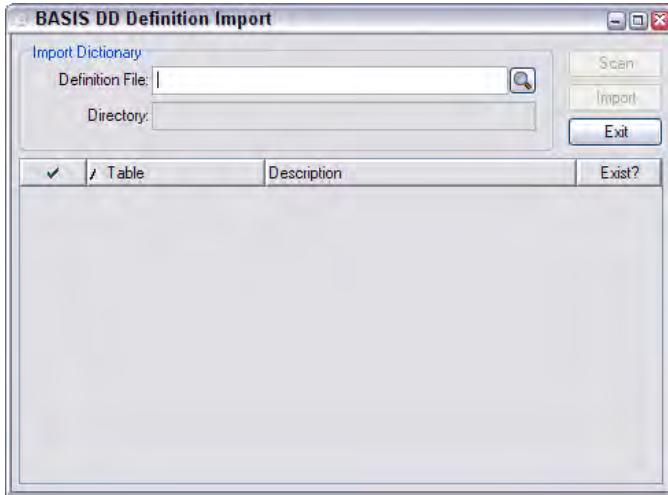
The primary issue when importing is the difference in the overall design of the data dictionaries. The BASIS DD is table (Alias or File) definition based. Users define a table, followed by multiple columns (Fields). The column name is not validated and can use any naming convention. The same field (Ex: Customer ID), can be used in multiple tables, using different column names for each definition (CUSTOMER_ID, CUST_ID, CUST_NO).

This is not an issue for ODBC/JDBC and reporting utilities because each table is treated as a separate entity. The BASIS DD does provide the ability to define an entry called a TypeDef, which allows a user to create a predefined data element for use throughout the dictionary. TypeDefs, however, are not widely used during creation of the BASIS DD.

The Barista uses a dictionary that **requires** data element types to be defined before a table is created. Table Maintenance will not allow a column to be defined unless there is a corresponding Element Type previously created in Element Type Maintenance. This import utility also creates Barista Element Type records for each unique column name imported from the BASIS DD.

Import Process

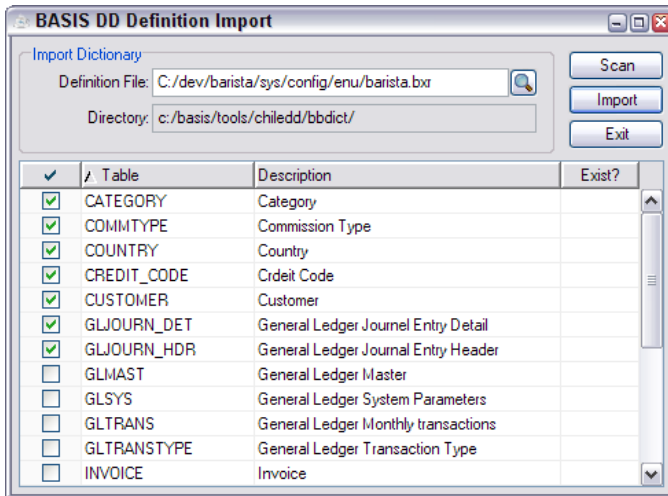
Note: The import process in Barista relies on many of the system globals and references defined in the source BASIS Data Dictionary. It is strongly recommended that you first create these via the Create Application Utility. (See Barista Online documentation on Creating and Synchronizing Applications)



- In not already existing, create an Import Definition File containing the entries described below. (See Import Definition File Format)
- Enter or find the predefined Import Definition File for this import. Press the magnifying glass to launch the “Find File” function.
- Once a valid definition file is entered, the ‘Scan’ button will be enabled. Pressing it will:
 - Read the contents of the Import Definition File and check the entries for accuracy.
 - Scan the source directory and list all tables defined in the selected BASIS DD.

The displayed grid columns are defined as follows:

Column	Description
Check (✓)	Specifies if the definition is selected for import to the target Barista dictionary.
Table	The Table ID in the BASIS DD system.
Description	The corresponding description of the table.
Exist?	Indicates (●) if the table definition currently exists in the target Barista dictionary.



- Once the defined tables are listed, select the files to be imported. A minimum of one table must be selected before the import will be allowed to continue.
- To select a different database, modify the “Definition File” entry and rescan. The tables for the new directory will be displayed.
- Note that all selected tables will overwrite existing definitions in Barista.
- To begin the import, press the “Import” button.

Import Definition File Format

The Import Definition File is required and contains the following entries that drive the import process. Its text format may be created and edited by the BASIS IDE, or any text editor. A base copy of the file can be found at `basis/barista/sys/lib/import.bxr`. We recommend you create a version for each database you wish to import.

Sample Definition File

```
// Barista Application Framework - BASIS DD Import Definition File
// Proprietary Information. BASIS International Ltd. All rights reserved.
DIR=c:/basis/tools/chiledd/bbdict
MOD=ZZ
PREFIX=ZZ_
COMP=ZZZ
PROD=123
XREF=COMP CODE;C;3;COMPANY_ID
XREF=COMPANY CODE;C;3;COMPANY_ID
XREF=ITEM_NO;C;16;ITEM_ID
XREF=ITEM_NUM;C;16;ITEM_ID
XREF=ITEM_NBR;C;16;ITEM_ID
```

DIR (Directory)

Specifies the path to the BASIS Data Dictionary files to import. The files, named "FILE.1", "FIELD.1", etc, normally reside in a "bbdict" directory after a standard install.

```
DIR=c:/basis/tools/chiledd/bbdict
```

MOD (Module)

Barista uses a Module table to store the status of installed applications. When importing new records, this two character code will be inserted into the Element Type and Table files. One MOD record type must exist in the definition file.

```
MOD=ZZ
```

PREFIX (Table ID and Element Type Prefix)

The prefix entry may be used to defined a system wide prefix for all imported Table and Element Type records. The following example would convert CUSTOMER to ZZ_CUSTOMER, ITEM to ZZ_ITEM, etc. One optional PREFIX record type may exist in the definition file.

```
PREFIX=ZZ_
```

COMP (ASC Company ID)

Specifies the ASC Company ID to use as a default when creating new Element Type and Table records. This code is used to identify records used by a specific set of application records. One COMP record type must exist in the definition file.

```
COMP=ZZZ
```

PROD (ASC Product ID)

Specifies the ASC Product ID to use as a default when creating new Element Type and Table records. This code is used to identify records used by a specific set of application records. One PROD record type must exist in the definition file.

PROD=123

XREF (Column Name Cross Reference)

Creates the cross reference table used for renaming columns names imported to Barista. These definitions are used to create consistency in databases having multiple names for the same data. Data type and length are used as additional verification when scanning names. An unlimited number of the optional XREF entries may exist.

XREF=COMPANYCODE;C;3;COMPANY_ID

XREF=ITEM_NO;C;16;ITEM_ID

XREF=ITEM_NUM;C;16;ITEM_ID

Field	Comment
Original Column Name	The original column name as it exists in BASIS Data Dictionary being imported.
Data Type	Data type of the column as defined in the BASIS Data Dictionary
Data Length	Data length of the column as defined in the BASIS Data Dictionary
New Column Name	The new column name to be created in Barista when the record is imported.